

ACI Heavy Duty Farm Tire Service New 9616 with 48107 Hand



ACI 9616 Crane, 96,000 ft. lb. Crane, rated to lift 12,000#@8', and 9,600#@10', 27.00-49 or 37.5-39 maximum recommended tire to be handled with crane and hand combination. 11' 4" outrigger span, turntable bearing rotation system powered by a high torque hydraulic motor through a ring and pinion type spur gear train. Painted white.

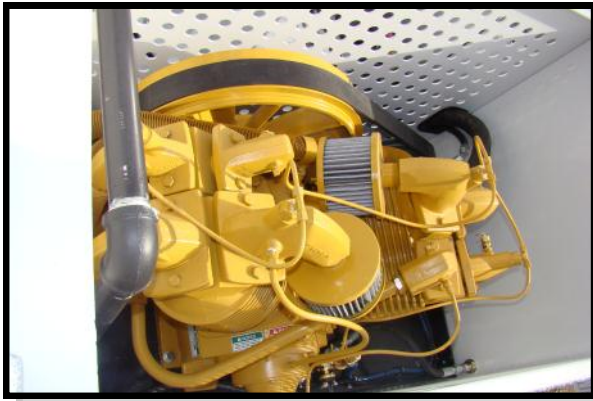
Positive pilot-operated load-holding counterbalance values on the extension and outrigger cylinders increase load holding security and operate only on command. The inner and outer cylinders have pilot-operated counter-balance valves. Painted white.





The ACI Model 48107 tire manipulator is a unique piece of equipment. This hand is far superior to any in the industry and has all of the features required to make tire changing as easy and safe as possible. It is designed to handle 4,800 lbs. of weight. Maximum opening of the clamp arms is 112" and the minimum opening is 40". By using the pad adapters ACI10565-6, the maximum opening becomes 100" and the minimum opening is 28".

Optional hydraulic rotation pads shown.



400 Gallon Calcium Skid; 400 gallon poly tank with built-in air agitator, steel tubing frame with lifting eye, anti-freeze dispenser, moisture separator, regulator, hose, ejector, 18 GPM, poly-pro flow pumping system complete with air agitator mixing system. Dry weight 700 lbs. 86.23" long x 36.25" wide x 47.74" high.

New Champion Model R70A Hydraulic driven air compressor system, mounted on top of body. Producing 110 CFM @ 175 PSI. Four cylinder two-stage industrial compressor special setup for top body installation, includes new base, belts, pulleys, belt tighter, hydraulic motor, and control valve. Set up for chassis with Electric Speed Control System.

SK-30 Top Bed Module Box



ACI offers you options others don't: new, used, or rebuilt to meet your budget. We are your service partner in the OTR tire market.