

25017PR Crane w/ TP160PR Hand



25017PR Crane, ACI Premium Re-Manufactured FEC Model 25017 series crane, 250,000 ft. lb. rating. This unit has been completely dismantled, sandblasted, painted, reassembled including all new hydraulic hoses, fittings, bearings, and pins as needed. Collars have been line bored as needed. All cylinders have been inspected, rods & cylinders components repaired or replaced as needed and resealed. This crane has been upgraded with ACI outrigger cylinder rod protection guards. This crane will be covered by the ACI warranty policy.

TP160PR, ACI Premium Re-Manufactured #TP160 hand with standard FEC yoke, link arm and pins. This unit has been completely dismantled, sandblasted & painted. New bearings, bushings and pins as needed. All cylinders have been inspected and resealed. New saw tooth ACI gripping pads, heavy duty travel pads, arm reinforcements and lifting eyes have been added to this unit.

New ACI Heavy Duty Deluxe Mining OTR Service Body, 21' long, special drop box in front section with fold-down gate for storage of blocks; Heavy Duty headache rack with work lights; 6-underbody tool compartments and 1- underbody air compressor compartment. Recessed light pockets in each wheel well skirt, 3/4" air-drain valve assembly located in left rear skirt, 1/4" deck plate with heavy duty cross-members and long sills. Triangle gussets on each cross-member and additional cross-members in center area of cargo area. All compartments are equipped with aluminum slide-top doors with slam locks. ICC lighting system with wiring harness; D-ring tie-downs on top and under center area of body. Painted white.



The Re-Manufacture process of the body and air compressor was not feasible; a new ACI Heavy Duty Deluxe Mining OTR Service Body and new Hydraulic-driven Champion Model R70A were installed.

New Champion Model R70A; Hydraulic-driven compressor system, mounted under body. Produces 110 CFM @ 175 PSI. Four-cylinder, two-stage industrial compressor, especially setup for underbody installation. Includes new base, belts, pulleys, belt tighter, hydraulic motor, and control valve. Set up for chassis with Electric Speed Control System.

ACI Hydro Oil Cooler MH3. This is a self-contained hydraulic cooling system, which includes a 4-gallon reservoir, oil cooler, system relief, and return line filter. Designed to remove heat and minimize the temperature build up to less than 40 degrees above ambient temperature. Equipped with a 40 GPM flow rating. ACI recommends this cooler system to be used for the large hydraulic-driven air compressor system.

ACI Pad Extenders on the hand; one pair of ACI10565 Quick-connect Pad extenders for 8 inch reduction and set of ACI Pad Extenders, ACI10676-13 Quick-connect Pad extenders for an additional 13 inch reduction.

ACI Super Charger 2011 Model SC10A; 10,000 PSI Hydraulic single hose reel system for operating jacks and bead-breaking tools. Complete with 4-gallon oil reservoir; auto-temperature control system; radio remote; manual override toggle switch; variable flow control; oil site gauge; hi-pressure hose reel with 45' of hi-pressure hose with quick couplers; splitter hose assembly with two hi-pressure shut-off-valves and quick couplers; Complete with 12-volt thermostat-controlled heater in oil reservoir.

Other items included in the package were: ACI Inflation / Deflation System, Heavy Duty Piggy-Back Hydraulic Pump and PTO with air shift, compartment and work lights added.

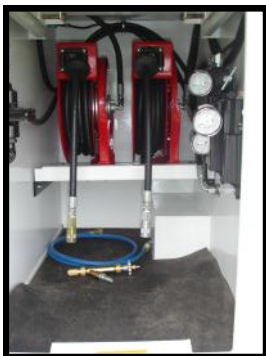
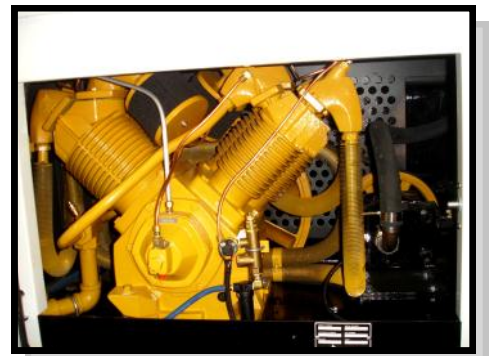
DO NOT OPERATE THIS CRANE UNLESS BOTH OUTRIGGERS ARE COMPLETELY DOWN AND IN THE PROPER POSITION

The 25017 crane is equipped with fold-down style outriggers that provide 15' span with a 12" X 19" pad on each leg. ACI modifies the cylinder guard assembly with a heavy duty guard, which will provide protection to the cylinder rod. The ACI system is equipped with grease zerks for the outer cylinder pin and the guard pin. The hydraulic cylinder is equipped with a holding valve to hold the load in case of hose failure.



ACI Hydraulic Oil cooler—
reducing required oil supply from
60 gallon to 4 gallon

ACI heavy duty guard to protect
cylinder rod



ACI Inflation—Deflation System that complies w/
MSHA Regulations for in-
flation and deflation OTR
Tires.

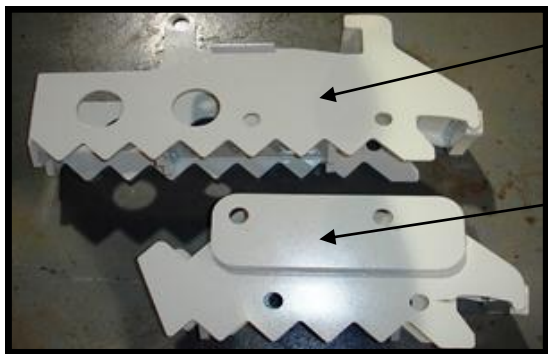
Steel brad air line from Air Compressor to Air Tank to reduce air turbulence



Special compartment for 4-Pull out Drawers



This TP160 hand is equipped with dual hydraulic cylinders for clamping pad rotation. Each cylinder rod is protected by the ACI slide- arm rod guard system. This will extend the life expectancy of the cylinders.



- Standard ACI 10674 Adapter—Reduces clamp size by 14" (using two pads—one on each side)
- ACI 10676-13 Stackable Adapter—Reduces clamp size by 13" (using two pads-one on each side)
- When used together, reduces clamp size by 27"

ACI offers you options others don't: new, used, or rebuilt to meet your budget. We are your service partner in the OTR tire market.