

- Splitter Lines with hi-pressure shutoff valves for operating two systems at the same time
- Easy To Install No More Air Line Freeze Up
- (4-Gal. Capacity) Can be installed on any service truck in the field
- Eliminates air operating foot pumps and the expensive maintenance



Model SC10A

(Heated Oil @ All Times)



- Operates jacks and bead breakers from the crane hydraulic system
- Hydraulic flow does not slow down under pressure
- Manual override system (requires hose reel)



Radio Remote Control With Magnet

(allows operator to stay clear of work area)



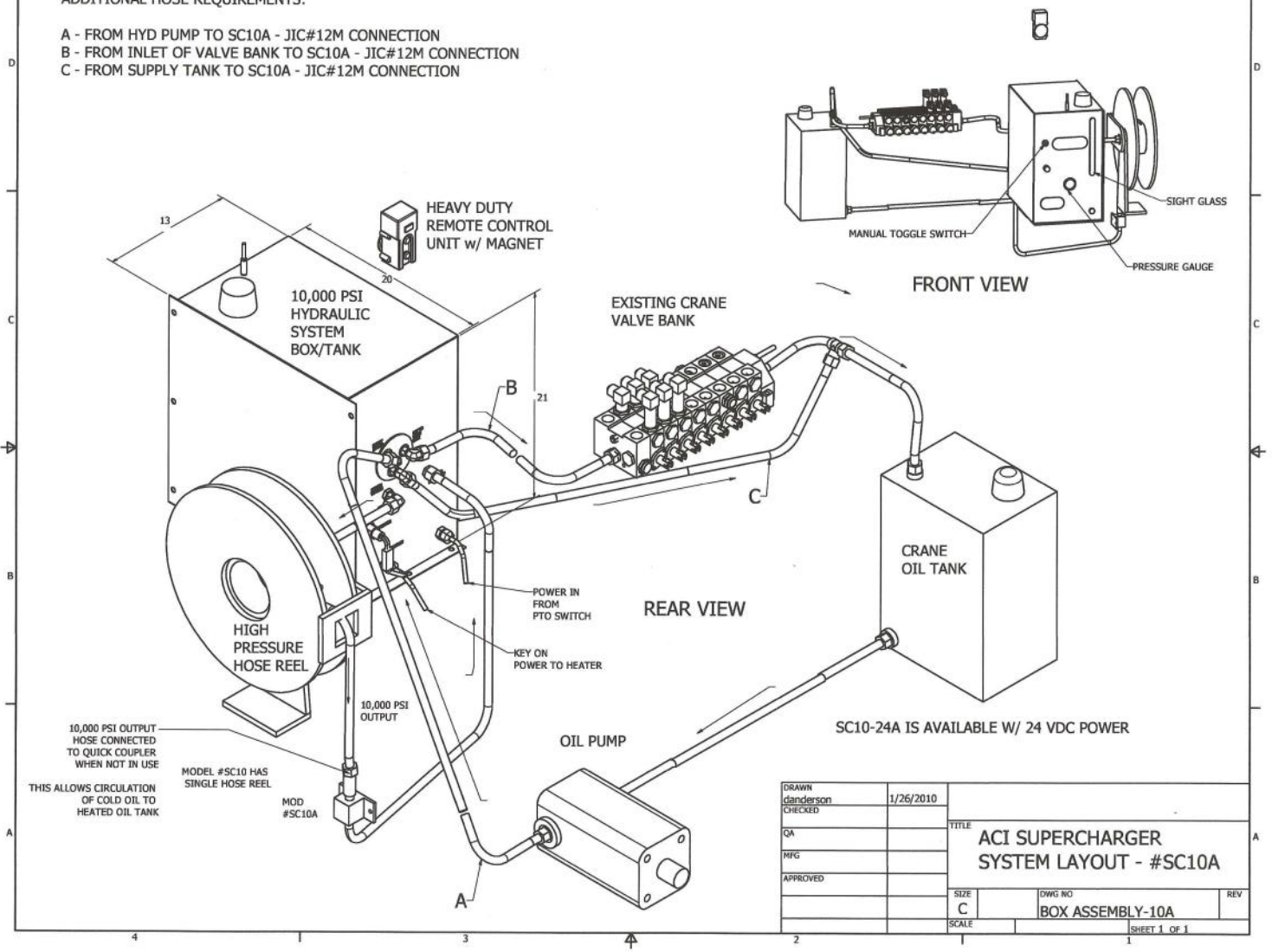
Hi-Pressure Hydraulic Hose Reel w/ 45' of Hose

Standard 12 Volt Electrical system, also available in 24 Volt

Super Charger designed to accommodate a Pressure Compensating Hydraulic System

ADDITIONAL HOSE REQUIREMENTS:

- A - FROM HYD PUMP TO SC10A - JIC#12M CONNECTION
- B - FROM INLET OF VALVE BANK TO SC10A - JIC#12M CONNECTION
- C - FROM SUPPLY TANK TO SC10A - JIC#12M CONNECTION



DRAWN danderson	1/26/2010	TITLE ACI SUPERCHARGER SYSTEM LAYOUT - #SC10A	
CHECKED		SIZE C	DWG NO BOX ASSEMBLY-10A
QA		SCALE	REV
MFG			
APPROVED			
		SHEET 1 OF 1	